



Sandcastle Preschool

"Where learning happens through play"



Theme: Welcome Friends!

September: 2019



Welcome to Sandcastle preschool! We are excited to get our school year started, and look forward to getting to know you and your children in the coming months.

Our newsletter will be posted in the cubby room each month to keep you up to date on all the fun and exciting activities we have planned, as well as on line at www.missionacl.org, click on **Sandcastle**.

Special points of interest:

- ☺ Field Trip News
- ☺ Playground Safety
- ☺ Community News

Inside this issue:

Volunteers & Students	2
Playground Safety— Wheelchair Parking	2
Supported Child development	De- 2
Field Trip	2
Circle Time / Signs	3
Preschool Business	3
Happy Birthday Wishes	3
Community News	3
Philosophy	4
September 2019	4

Color Table

We are introducing a different color each month where we celebrate colors in different shades and tones. We will also be working on a year long book that will be illustrated by your child and given to your child at the end of our year. It is a wonderful way to capture their creations and re tell the story at home with friends and family.

Nut Free:

Due to severe allergies to **peanuts and tree nuts** our preschool is a **nut-free zone!** Thanks for helping to keep everyone at our school safe!



Playground safety-wheel chair parking:

Only children that are registered in our program may access the playground, due to licensing and insurance regulations.

Some of our families may have a wheel chair parking permit, please ensure the accessible space is left open for them.

Thanks for your co-operation!



Supported Child Development Program:

The Supported Child Development program is a free service to the families of Mission. This program provide services to children who require extra support in child care settings. It is also part of Mission Association for Community Living. Please see parent board for more info.....

Field trip to the Pumpkin Patch!

We'll be visiting **Willowview** farms in October!
It is located at 288 McCallum Rd. in Abbotsford.



All children from the **Yellow & Orange classes will go on Thursday October 10th.**

All children from the **Blue and Green classes will go on Friday October 11th.**

The tour starts at **9:30 am**, and ends at **10:30 am**. There is a **\$7.35** cost per child, **each child can take one parent on the hayride**, and choose a pumpkin to take home! There is also a petting zoo, freshly pressed apple juice and an orchard fresh apple for each child at the end of the tour. Children under 2 and parents are free, older siblings pay tour price. **Please give your \$7.35 to Barbara or Jackie by October 9th.**

***A plastic shopping bag is helpful to carry your pumpkin.**

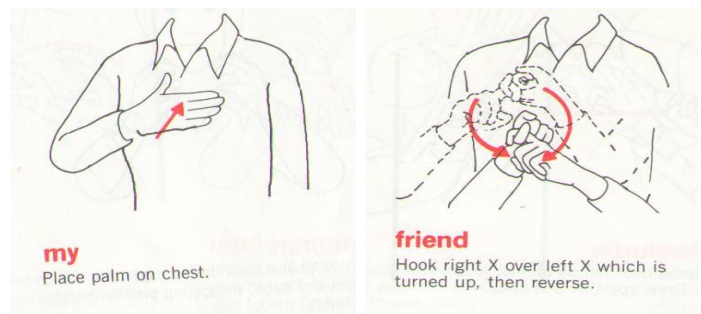
****We attend rain or shine, bring your boots!**

*****No afternoon classes.**

****** Families are welcome to stay and enjoy the farm as long as you like!**

Sign Language

At preschool we use some sign language during our classes, and the children are given the opportunity to learn and practice signs!



Circle time song

At the beginning of each circle time, we sing with our voices and our hands. Ask your child to teach you the song and signs!

"Hello my friends, hello...hello my friends hello....hello my friends, hello my friends , hello my friends hello...hello"

Although it is a simple song we are going to be adding different languages throughout the year so if your family speaks a different language at home we would love to learn and celebrate that language too!

Happy September Birthdays!



Community News

Mission Farmers Market: Saturdays in September, located beside Mission Public Library.

Mission Public Library: Wednesdays at 3:00-4:30- Lego club.

Tuesday, September 18th from 10:30-11:30- Scientific Storytime Spectacular!

Wednesday, September 19th from 1030-1130- Wiggle Time!



Sandcastle Preschool

"Where learning happens through play"

33345 2nd Ave

Mission BC V2V 1K4

Phone: 604-826-0622

Fax: 604-826- 9611

Philosophy

Sandcastle Preschool believes in the value of play and follows a play-based model of early education. We believe children learn best when they are exploring materials freely and interacting with their peers in an inclusive setting. Each child is encouraged to learn at their own pace through exploration and discovery.

Most importantly we believe children's learning should be fun!

If you have any questions or concerns, please feel free to ask!

Email:
sandcastle@macl.bc.ca



Website:
www.missionacl.org

September 2019

Sun	Mon	Tue	Wed	Thu	Fri	Sat
Find the complete news-letter online!	www.missionacl.org	Theme: Welcome Friends!				
1	2 Labour day	3	4 Centre visits	5 Centre visits	6 Centre visits	7
8	9 Gradual entry	10 Gradual entry	11 Gradual entry	12 Gradual entry	13 Full classes start Blue & Green	14
15 	16	17 Full classes start Yellow	18	19	20	21
22	23	24	25	26 Head lice checks	27 Head lice checks	28
29	30		Look ahead.... 	Field trip to Willowview Farms!	Oct. 10th And Oct. 11th	