



Sandcastle Preschool

"Where learning happens through play"



United Way
COMMUNITY PARTNER

Theme: Welcome Friends!

September: 2017



Welcome to Sandcastle preschool! We are excited to get our school year started, and look forward to getting to know you and your children in the coming months. Our newsletter will be posted in the cubby room each month to keep you up to date on all the fun and exciting activities we have planned, as well as on line at www.missionacl.org, click on Sandcastle.

Special points of interest:

- ☺ Field Trip News
- ☺ Playground Safety
- ☺ Community News

Inside this issue:

| | |
|---|---|
| Volunteers & Students | 2 |
| Playground Safety— Wheelchair Parking | 2 |
| Supported Child Development | 2 |
| Field Trip | 2 |
| Circle Time / Signs | 3 |
| Preschool Business | 3 |
| Happy Birthday Wishes/Sign Language | 3 |
| Community News | 3 |
| Philosophy | 4 |
| September 2017 | 4 |

Welcome New staff

We welcome Jackie Aitchison to our staff team this year, in the Assistant Supervisor Position. She has been a practicum student, and casual staff here at Sandcastle, she will have her full ECE license to practice in the next few months. She brings a love of music and art to our program, and a "fresh out of school" perspective.



Nut Free: Due to severe allergies our preschool is a nut-free zone! Thanks for helping to keep everyone safe.

Volunteers & students

We would like to welcome Celena from the UFV Early Childhood Education program. She'll be doing her 1st practicum with us this fall, and we look forward to teaching her about our play based program.

Playground safety-wheel chair parking

Only children that are registered in our program may access the playground, due to licensing regulations. Also, please respect our wheelchair parking space, only use it with a valid permit. Thanks for your co-operation!



Supported Child Development

The Supported Child Development program is a free service to the families of Mission. They provide services to children who require extra support in child care settings. Please see parent board for more info.....

Field trip to the Pumpkin patch!

We'll be visiting **Willowview Farms** at 288 McCallum Rd. Abbotsford. All of the children from the Yellow & Orange classes will go on Thursday October 5th, Blue and Green classes will go on Friday October 6th. We'll meet at the farm at 10:15 am. The tour starts at 10:30 am, and ends at 11:30 am. There is a **\$7.00** cost per child, **each child can take one parent on the hayride**, and choose a pumpkin to take home! There is also a petting zoo, freshly pressed apple juice and an orchard fresh apple for each child at the end of the tour. Children under 2 and parents are free, older siblings pay tour price. **Please give your \$7:00 to Lisa or Jackie by October 4th.** A plastic shopping bag is helpful to carry your pumpkin.

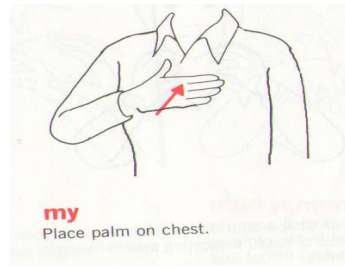
***We attend rain or shine, bring your boots!**

**** No afternoon classes****



Sign Language

At preschool we use some sign language during our classes, and the children are given the opportunity to learn and practice signs!

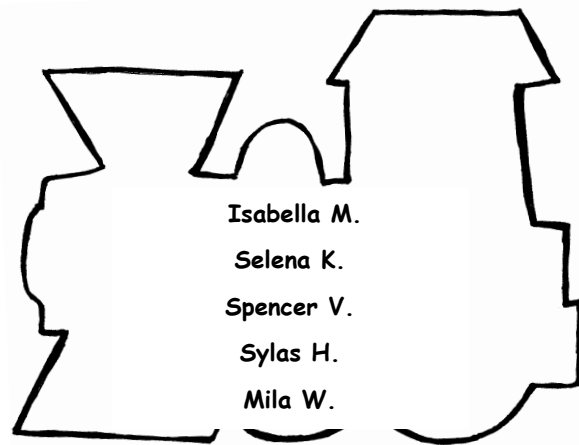


Circle time

At the beginning of each circle time, we sing with our voices and our hands. (sign)

"Good morning/afternoon to you, good morning/afternoon to you,
We're all in our places, with bright shining faces, this is the way to start our new day!"

Happy September Birthdays!



Community News

Mission Farmers Market- Saturdays in September, located beside Mission Public Library.

Terry Fox Run/Walk- Sept. 17th, 9:00-11:00am at Heritage River Park. For more info, email info@terryfoxrun.org

Horse Club Community Day- Sept. 17th. Free family event, pony rides, face painting and more, www.missionhorseclub.org.

Mission Leisure Centre- Sept. 22nd, discount swim 11:00-3:00, skate 1:00-2:30

Chalk it up- Mission Library, 3:30-4:30, call 604-826-6610 for more info

Sandcastle Preschool

"Where learning happens through play"

33345 2nd Ave
Mission BC V2V 1K4



Phone: 604-826-0622

Fax: 604-826-9611

Philosophy

Sandcastle Preschool believes in the value of play and follows a play-based model of early education. We believe children learn best when they are exploring materials freely and interacting with their peers in an inclusive setting. Each child is encouraged to learn at their own pace through exploration and discovery. But most importantly we believe children's learning should be fun!

If you have any questions or concerns, please feel free to ask!



September

| Sun | Mon | Tue | Wed | Thu | Fri | Sat |
|---|--|---|---|---------------------|---|-----|
| Find the complete news-letter online! | Www.missionacl.org | Theme: Welcome Friends |  | | 1 | 2 |
| 3 | 4 Labour day No classes | 5 | 6 Centre visits | 7 Centre visits | 8 Centre visits | 9 |
| 10 | 11 Gradual entry | 12 Gradual entry | 13 Gradual entry | 14 Gradual entry | 15 Full classes start Blue & Green | 16 |
| 17 | 18 | 19 Full classes start Yellow & Orange | 20 | 21 | 22 | 23 |
| 24  | 25 | 26 | 27 | 28 | 29 Field trip.. Oct 5th and 6th Willowview farms..... | 30 |